

# Netropy Traffic Generation

## L2-L3 & L4-L7 Ease of Use and Features

### Executive Summary

Benchmarking is essential if companies are going to deliver on service level agreements (SLA). Validating the traffic handling characteristics of networks, applications and security solutions is the only way to deliver services with confidence. Traffic generators have been available for quite some time. In many cases, though, the complexity and expense of traffic generators has kept them out of all but the larger enterprise labs. Apposite seeks to redefine the traffic generator with its Netropy series. Netropy Traffic Generation delivers a wide range of L2-L3 and L4-L7 functions all using a browser-based GUI and at a price point attractive even to smaller companies.

Apposite Technologies commissioned Tolly to evaluate the ease-of-use features of its Netropy Traffic Generation solution, specifically the Netropy TrafficEngine - one of four applications available. Testing was conducted using the Netropy 10G2 platform that provided four ports capable of 10GbE. In addition to confirming wire throughput capabilities, Tolly exercised a range of throughput testing scenarios.

Tolly tests confirmed that the Netropy 10G2 can send and receive zero-loss, wire-speed 10GbE traffic on both sets of ports simultaneously. Tolly engineers were able to configure both lower-level and upper-level protocol tests without any product training using the browser based GUI. See Figure 1.

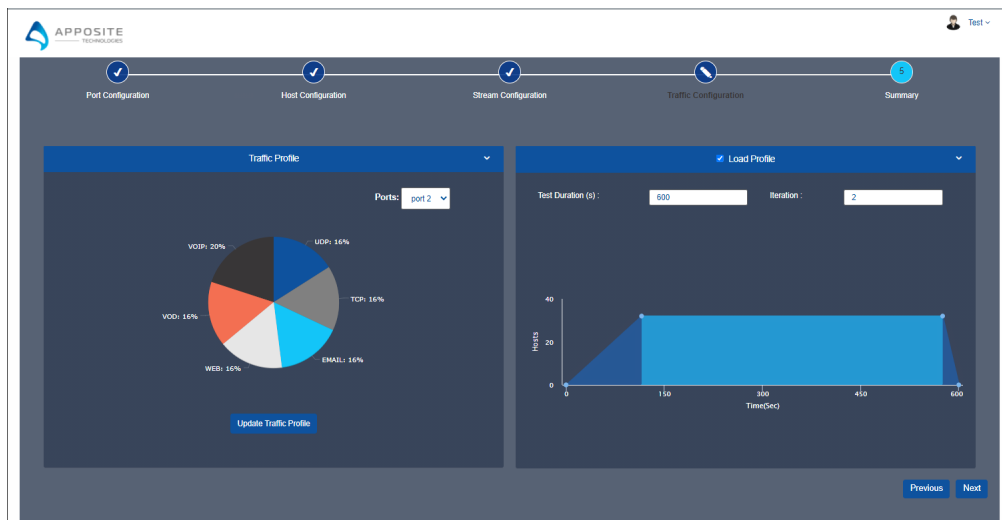
### The Bottom Line

Netropy Traffic Generation Solutions provide:

- 1 Browser-based GUI requiring no product training
- 2 Lower-stack L2-L3 and upper-stack L4-L7 protocol tests
- 3 Wizard-drive test configuration
- 4 10GbE zero-loss, wire speed throughput across all ports

### Apposite Tech. Netropy Traffic Generation Multi-protocol Traffic & Load Profile Configuration

Customize protocol mix by dragging wedges



Customize run time and repetitions by entering data or dragging image bars

Source: Tolly, October 2021

Figure 1

## The Need for Network Traffic Testing

Many network operations teams have become accustomed to deploying network infrastructure without rigorous performance testing. This is typically because the cost and complexity of the equipment required to carry out these tests was prohibitive in the past.

The migration to software-defined networks and SASE<sup>1</sup> has made throughput testing even more critical as security functions are integrated into network switch/router devices. Overhead caused by security processing (e.g., deep packet inspection) can slow down performance especially if the CPU specifications are inadequate.

Similarly, virtualized network functions (VNF) rely on servers for physical resources and without actual benchmarking, performance

can only be guessed at. Only by benchmarking actual performance can data sheet numbers be validated and network elements deployed with confidence.

## Testing With Netropy 10G2

This report will be simple and visual - which reflects the nature of the Netropy 10G2. It is both simple and visual.

The solution is wizard-based and steps the user through five straightforward steps: 1) Port Configuration, 2) Host Configuration, 3) Stream Configuration, 4) Traffic Configuration, and 5) Summary/Run. The steps are displayed at the top of Figure 1.

Port Configuration. The user selects which of the units ports will be used for a specific test. Multiple users can share the device with each reserving the ports it requires. The 10G2 unit tested has four ports thus allowing

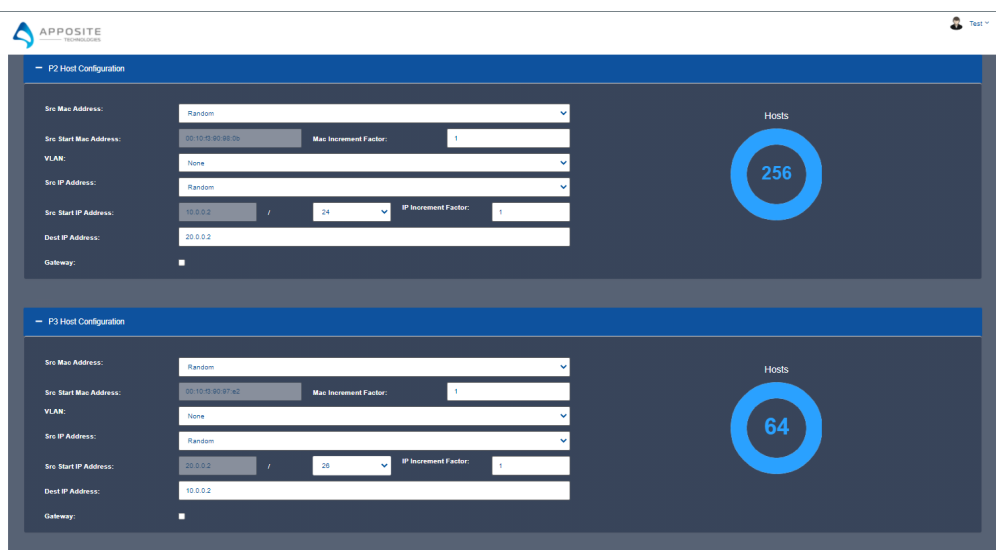


two users each to reserve a pair of ports. (Screen not shown.)

2) Host Configuration. The user can choose simple or sophisticated host parameters. The user can also choose the number of host addresses, up to 1 million addresses, to be generated. See Figure 2.

### Apposite Tech. Netropy Traffic Generation Host Configuration

Configure source and destination Host information. Full configurability for number of hosts, random or specific MAC, IP addresses or ranges. Support for VLANs



Source: Tolly, October 2021 Figure 2

<sup>1</sup> Secure Access Service Edge, a term coined by industry analyst group Gartner, Inc.


The user can select random or custom MAC and/or IP addresses along with specifying IP gateway information.

3) Traffic Configuration. Here, the user provides details of the protocol mix required for the test. For basic L2 tests, the traffic mix is not relevant but it is very important for higher level, L4-L7 test scenarios.

Users can generate complex mixes of traffic including application profiles such as email, VoIP, and video streaming that mimic actual traffic found in production networks.

The user can also specify transmission rates for traffic. In some instances, that might mean full line rate. In other instances, the traffic levels might be customized to lower rates to match the actual bandwidth or specifications of the system under test. Furthermore, users can automate test configuration and execution via the RESTful API. See Figure 3.

### Apposite Netropy



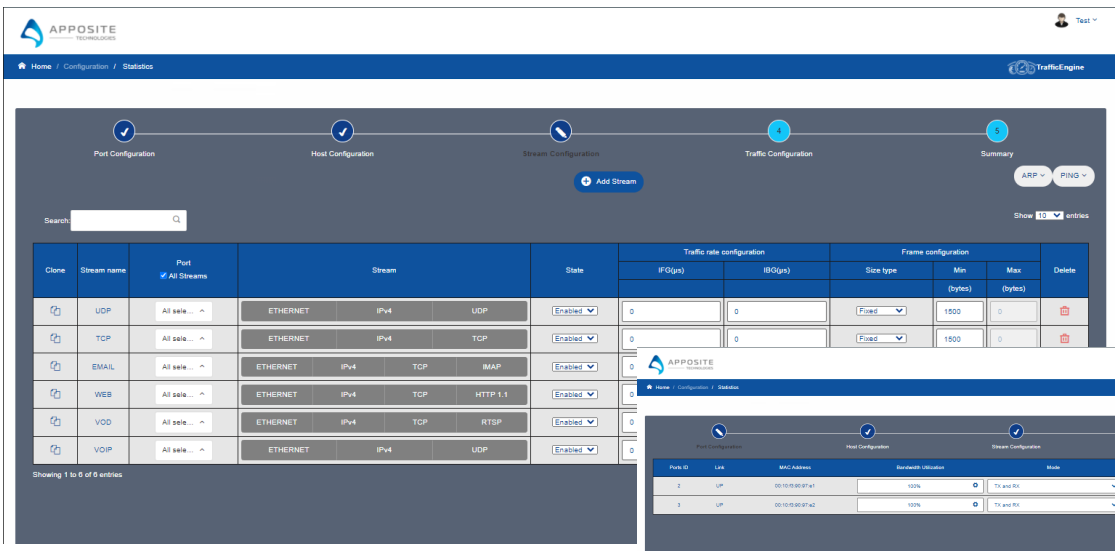
Netropy Traffic Generation Solutions offer a modern way to test networks, applications, and security performance with four applications on one consistent user interface.

- Benchmark the raw packet level performance of networks and devices with classical performance measurements like latency throughput and loss with TrafficEngine.
- Capture, reproduce, and amplify production traffic to a tremendous scale in a controlled lab environment with AppPlayback
- Generate a high volume or application traffic and security attacks to optimize performance of application aware devices and systems with AppStorm
- Evaluate the session holding capabilities of stateful network devices and servers with SessionStrike

Netropy Traffic Generation is often 1/3 to 1/2 the price of older, legacy solutions.

Source: Apposite Technologies, October 2021

### Apposite Tech. Netropy Traffic Generation Multi-protocol Configuration



Left: Configure specifics for each protocol

Below: Configure traffic rates for each port

Figure 3

Source: Tolly, October 2021

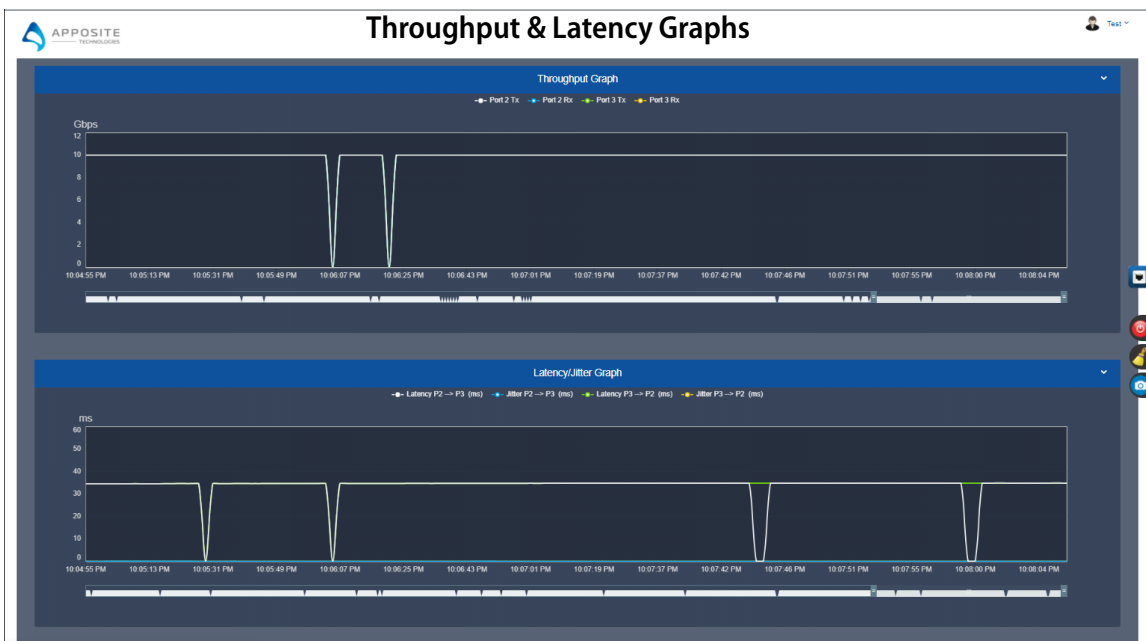
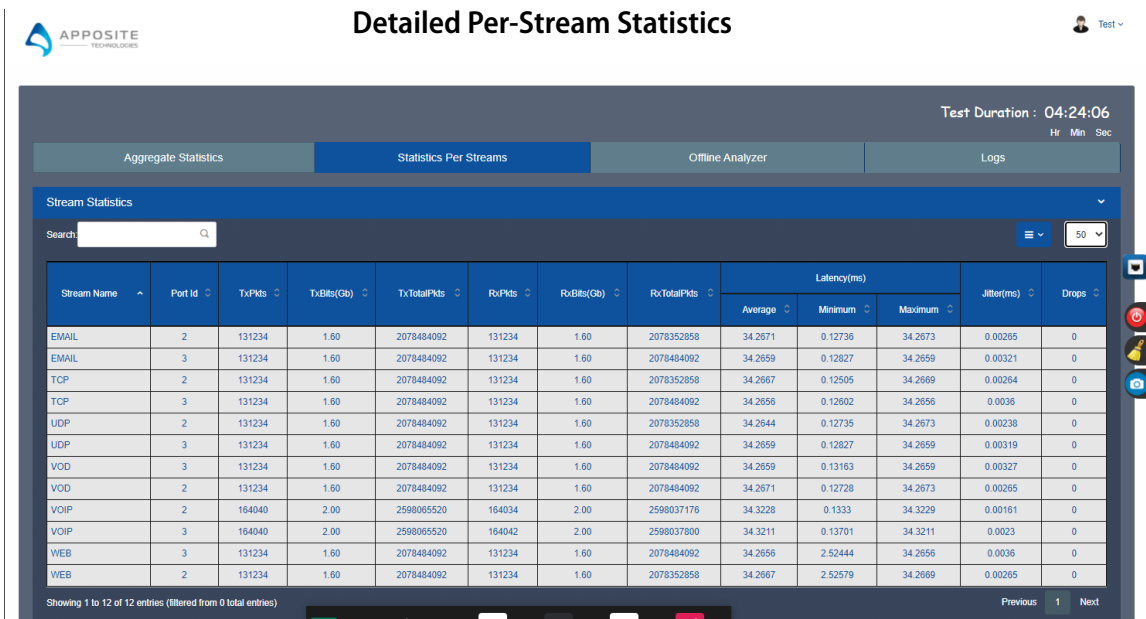
### Test Results

Upon test completion, the user has immediate access to results and statistics. Reports can also be saved for offline analysis. Figure 4 provides two examples of results

analysis. The upper example shows a stream-by-stream detail of transmitted and received traffic. The results also include average, minimum and maximum latency along with jitter and any lost traffic counts.

The lower example shows a graph of throughput and latency over the course of the test making it easy to see where anomalies occurred during the test run.

## Apposite Tech. Netropy Traffic Generation



Source: Tolly, October 2021

Figure 4



## About Tolly

The Tolly Group companies have been delivering world-class information technology services for over 30 years. Tolly is a leading global provider of third-party validation services for vendors of information technology products, components and services.

You can reach the company by E-mail at [sales@tolly.com](mailto:sales@tolly.com), or by telephone at +1 561.391.5610.

Visit Tolly on the Internet at:

<http://www.tolly.com>

## Terms of Usage

This document is provided, free-of-charge, to help you understand whether a given product, technology or service merits additional investigation for your particular needs. Any decision to purchase a product must be based on your own assessment of suitability based on your needs. The document should never be used as a substitute for advice from a qualified IT or business professional. This evaluation was focused on illustrating specific features and/or performance of the product(s) and was conducted under controlled, laboratory conditions. Certain tests may have been tailored to reflect performance under ideal conditions; performance may vary under real-world conditions. Users should run tests based on their own real-world scenarios to validate performance for their own networks.

Reasonable efforts were made to ensure the accuracy of the data contained herein but errors and/or oversights can occur. The test/audit documented herein may also rely on various test tools the accuracy of which is beyond our control. Furthermore, the document relies on certain representations by the sponsor that are beyond our control to verify. Among these is that the software/hardware tested is production or production track and is, or will be, available in equivalent or better form to commercial customers. Accordingly, this document is provided "as is", and Tolly Enterprises, LLC (Tolly) gives no warranty, representation or undertaking, whether express or implied, and accepts no legal responsibility, whether direct or indirect, for the accuracy, completeness, usefulness or suitability of any information contained herein. By reviewing this document, you agree that your use of any information contained herein is at your own risk, and you accept all risks and responsibility for losses, damages, costs and other consequences resulting directly or indirectly from any information or material available on it. Tolly is not responsible for, and you agree to hold Tolly and its related affiliates harmless from any loss, harm, injury or damage resulting from or arising out of your use of or reliance on any of the information provided herein.

Tolly makes no claim as to whether any product or company described herein is suitable for investment. You should obtain your own independent professional advice, whether legal, accounting or otherwise, before proceeding with any investment or project related to any information, products or companies described herein. When foreign translations exist, the English document is considered authoritative. To assure accuracy, only use documents downloaded directly from Tolly.com. No part of any document may be reproduced, in whole or in part, without the specific written permission of Tolly. All trademarks used in the document are owned by their respective owners. You agree not to use any trademark in or as the whole or part of your own trademarks in connection with any activities, products or services which are not ours, or in a manner which may be confusing, misleading or deceptive or in a manner that disparages us or our information, projects or developments.