

NETROPY<sup>®</sup> TRAFFIC GENERATION:  
ADMINISTRATION  
USER'S GUIDE

*Release 2.0*



APPOSITE  
— TECHNOLOGIES

Netropy® Traffic Generation Administration User's Guide

Revision 2a, July 2024

**Apposite® Technologies LLC**

4223 Glencoe Ave, Suite B121  
Marina Del Rey, CA 90292 USA  
1.310.477.9955  
info@apposite-tech.com  
www.apposite-tech.com

Copyright ©2005-2024 Apposite Technologies LLC. All rights reserved. Apposite, Linktropy, and Netropy Network Emulators and Traffic Generations are registered trademarks of Apposite Technologies LLC. The Apposite logo and "WAN Emulation Made Easy" are trademarks of Apposite Technologies LLC. Android and the Google Play logo are trademarks of Google Inc.

Part No. DOC-UG-NTG-AD-2a

# CONTENTS

---

- Contents ..... 3
- 1 Overview ..... 4
- 2 Administration ..... 5
  - 2.1 User Settings ..... 5
  - 2.2 Port Settings ..... 6
  - 2.3 Capture Settings ..... 7
  - 2.4 License Settings ..... 7
  - 2.5 Update Software Settings ..... 8
  - 2.6 Advanced Settings ..... 8
    - 2.6.1 Time Zone ..... 9
    - 2.6.2 Signature ..... 9
    - 2.6.3 Binary Search ..... 9
    - 2.6.4 Multisite AppStorm/AppPlayback Sync Port ..... 10
    - 2.6.5 Logging Frequency ..... 10
    - 2.6.6 DNS Queries File ..... 10
  - 2.7 Diagnostics ..... 10

# 1 OVERVIEW

---

Apposite Technologies would like to thank you for purchasing the Apposite Technologies' Netropy Traffic Generation device. This User's Guide is intended to provide Administration Configuration steps for this product. Please reference the *Quick Start Guide* and *Hardware Guide* for additional information. The Quick Start Guide may be used to facilitate initial configuration and the Hardware Guide to outline the specific hardware components for each model.

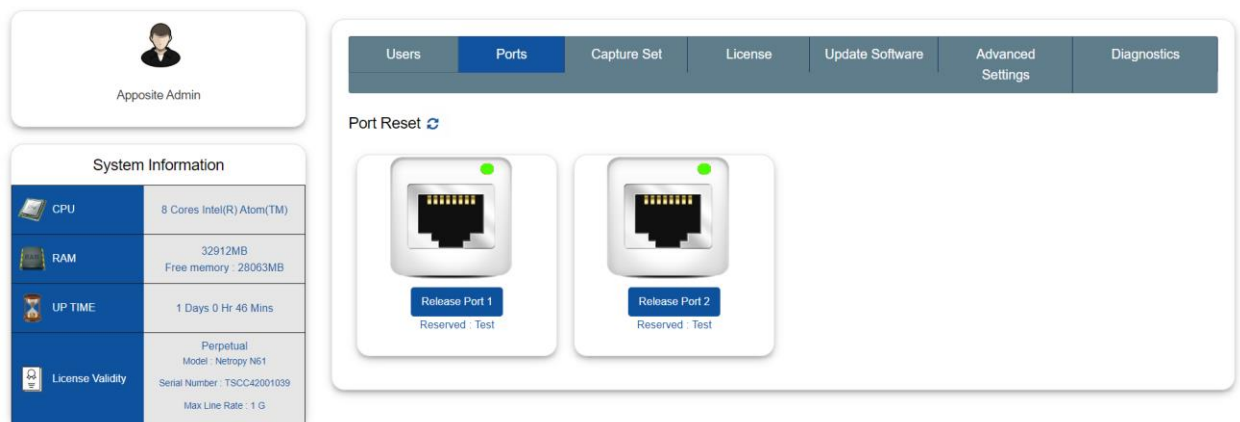
# 2 ADMINISTRATION

---

The Netropy Traffic Generation device can be administered through the Administration portal accessible via browser. The administrator must log in using their administrative credentials.

## 2.1 User Settings

The User tab presents options to add, edit, and delete users. By default, there will only be a single user account, the administrator. To create additional accounts to manage and configure test beds, the administrator must add new users.



**Figure 1: User Tab**

When adding a new user, the following information is required:

- ▶ First Name
- ▶ Last Name
- ▶ User Name
- ▶ Email
- ▶ Password
- ▶ Automation access

The account will be created once the "Create User" button is selected. This user will then be able

to access the configuration portal using their new credentials. Only the administrator will have access to these permissions. Other users will be able to make configuration changes but will not have privileges to access and manage other accounts.

## 2.2 Port Settings

The Ports tab displays the status of ports and allows the administrator to manually release ports as needed. This will override any port releases and reservations made by other user accounts.

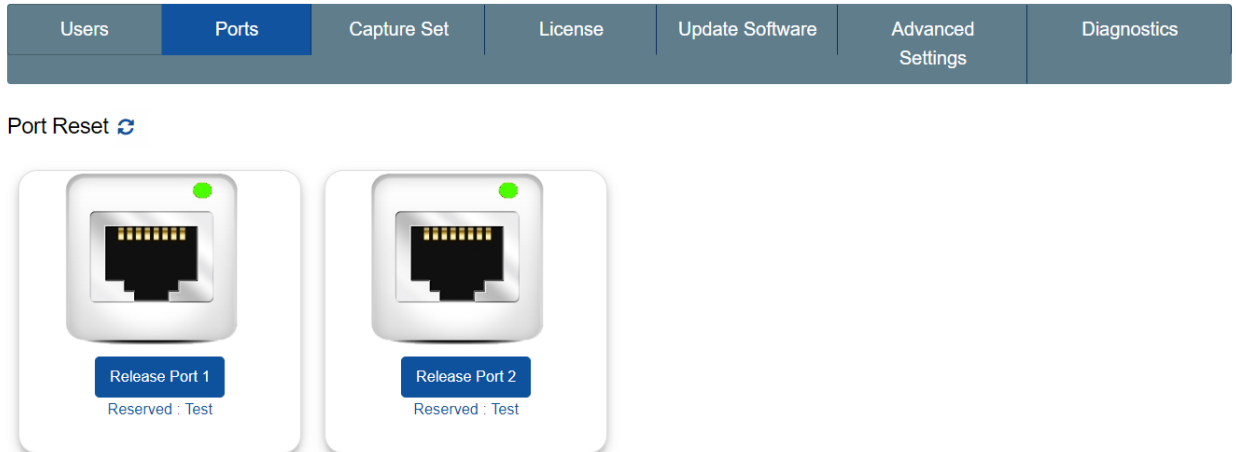


Figure 2: Port Tab

To release a port, click on the associated “Release Port X” button. As demonstrated in the figure below, this button will open a pop-up that displays the IP Address, status, speed, MAC address, and details on whether the port is reserved. By clicking “Release” the port will be released.

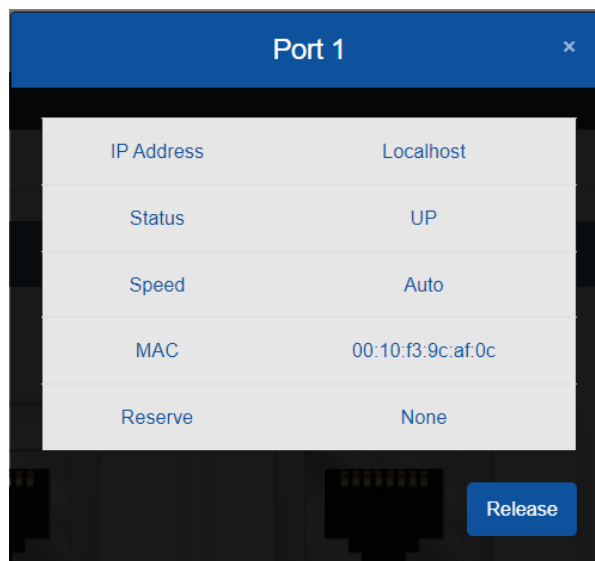


Figure 3: Release Port Settings

## 2.3 Capture Settings

The Netropy Traffic Generation device can be configured to capture a specific number of packets during a session. By default, the number of packets to capture will be set to 100 packets. This setting can easily be altered by clicking the drop-down menu, as shown in the figure below. Options in this menu will range from 100 packets to 1,000,000 packets.

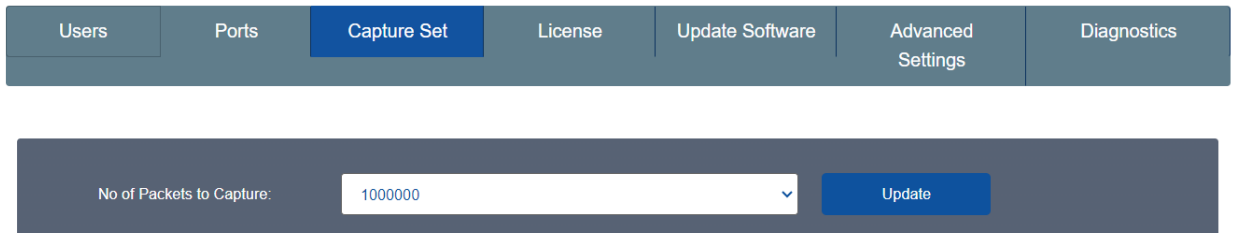


Figure 4: Capture Settings

Click “Update” to initiate these changes and ensure all future packet sessions will capture the specified number of packets.

## 2.4 License Settings

The License tab will display the license, license type, license validity, and the number of licensed ports. To obtain additional information on how to renew a license, visit <https://www.apposite-tech.com/renewals/> to submit a renewal request form.

To add a license key, click the “Browse” button to search for files on your device. After selecting the applicable file, click “Open” in file explorer. Then, proceed by selecting “Upload” to upload the license key file into the system.

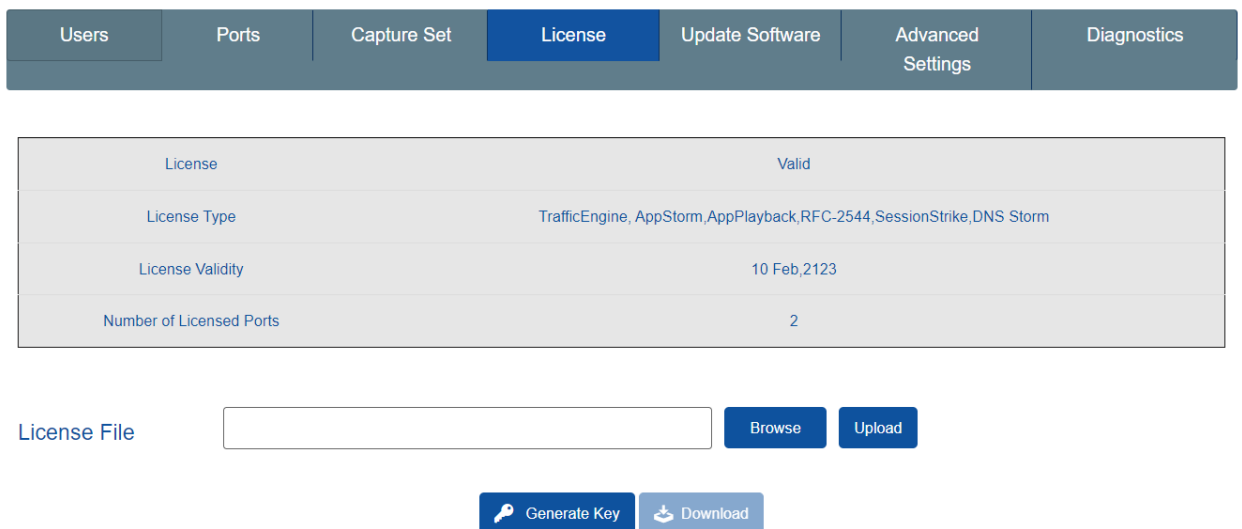


Figure 5: License Tab

## 2.5 Update Software Settings

The Update Software tab allows the selection of a BIN file to update the system software. To update the BIN file, select the plus button icon, and select the appropriate file on your PC. After selecting the file, the system will request a system reboot. Select “Yes” to allow the system to apply all necessary patches and updates.

Select the plus button icon and select the Pcap tar file on your PC. It will update the pcaps. This feature will add or remove the pcaps.

The screenshot shows the 'Update Software' tab selected in a navigation bar. Below the navigation bar, there are two sections:

- 1. Upload Bin file**: A text input field containing 'No file selected' and a blue '+' button to the right.
- 2. Add Pcap Remove Pcap**: Radio buttons for 'Add Pcap' (selected) and 'Remove Pcap'. Below this is another text input field containing 'No file selected' and a blue '+' button to the right.

Figure 6: Update Software Tab

## 2.6 Advanced Settings

The Advanced Settings tab allows management of time zone, signature, binary search, DNS Queries File, Authentication, NAS IP, and Secret Key.

The screenshot shows the 'Advanced Settings' tab selected in a navigation bar. The main content area contains the following settings:

- Select Timezone:** A dropdown menu showing '(GMT+00:00) UTC'.
- Signature:** Radio buttons for 'IP Option' and 'Payload' (selected).
- Binary Search:** Radio buttons for 'Fast converging' (selected) and 'Traditional'.
- Multisite AppStorm/AppPlayback Sync Port:** A text input field containing '10000'.
- Logging Frequency :** A dropdown menu showing '5 sec'.
- Update:** A blue button.
- DNS Queries File:** A 'Choose File' button, a text input field containing 'No file chosen...', and an 'Upload' button.

Figure 7: Advanced Settings



## 2.6.1 Time Zone

Users can select the time zone of their location. To select the time zone, click the down arrow next to the default time by the “Select Timezone” value.

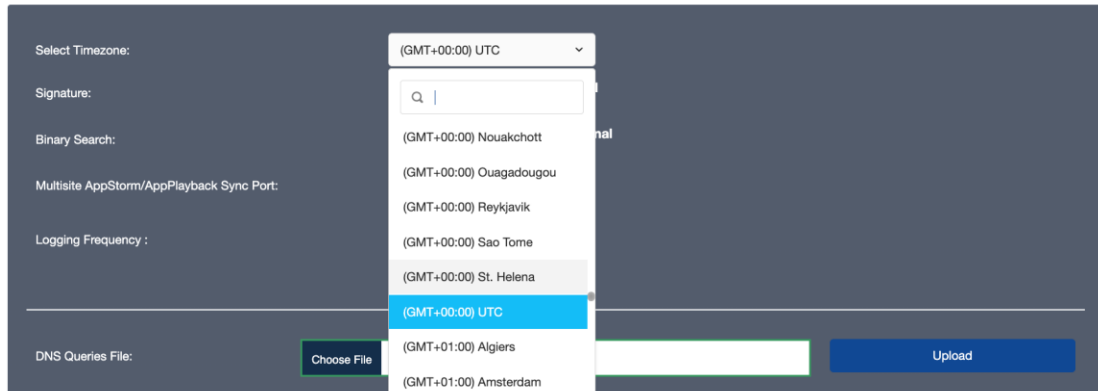


Figure 8: Time Zone

## 2.6.2 Signature

The selection determines where the control information used by NTG gets stored in the packets being transmitted.

1. **IP Options:** In this case, the control information is stored in the IP options field in the IP header.
2. **Payload:** In this case, the control information is stored in the IP Payload.

To select one of the two options, select the applicable radio button. Then, click “Update” to complete the change.



Figure 9: Signature

## 2.6.3 Binary Search

By default, Binary Search is set to “Fast converging”, but there exists an option to change this value to “Traditional”.



Figure 10: Binary Search

## 2.6.4 Multisite AppStorm/AppPlayback Sync Port

By default, the Multisite AppStorm/AppPlayback Sync Port value is set to 10000.

To update this field, please enter a new value and select “Update”.

A screenshot of a configuration interface. On the left, the text "Multisite AppStorm/AppPlayback Sync Port:" is displayed. To its right is a white text input field containing the number "10000". Further to the right is a blue button with the text "Update" in white.

Figure 11: Sync Port

## 2.6.5 Logging Frequency

Users can select a logging frequency between 1 second and 5 seconds from the drop the dropdown and select “Update” to ensure the system changes this frequency.

For a shorter testing window, you may want to have a smaller logging frequency. Whereas, for a longer testing window, you may want to have a larger logging frequency.

A screenshot of a configuration interface. On the left, the text "Logging Frequency :" is displayed. To its right is a dropdown menu with a white background and a blue border, showing "5 sec" and a downward arrow. Below the dropdown is a blue button with the text "Update" in white.

Figure 12: Logging Frequency

## 2.6.6 DNS Queries File

The DNS Queries File consists of the lists of domain names used by the DNS Storm feature when sending DNS queries. The DNS Storm feature cycles through this list of domain names.

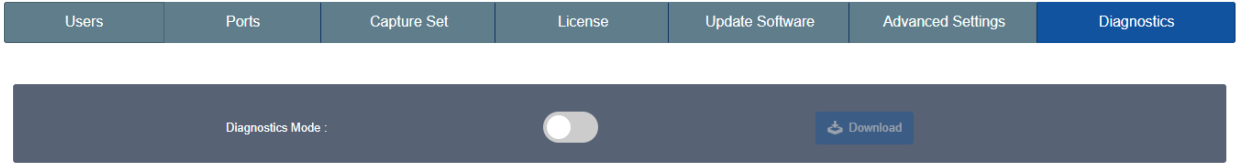
Select “Choose File” to choose the appropriate DNS Queries File. Then, click “Upload” to complete the change after selecting the file.

A screenshot of a configuration interface. On the left, the text "DNS Queries File:" is displayed. To its right is a "Choose File" button. Next to it is a white text input field containing the text "No file chosen...". Further to the right is a blue button with the text "Upload" in white.

Figure 13: DNS Queries File

## 2.7 Diagnostics

In the Diagnostics menu, you have the option to go into Diagnostic Mode by toggling the switch on. In this mode, you can troubleshoot system issues.



**Figure 14: Diagnostic**

**Apposite® Technologies LLC**

4223 Glencoe Ave, Suite B121  
Marina Del Rey, CA 90292 USA  
1.310.477.9955  
info@apposite-tech.com  
www.apposite-tech.com

